

# Move Ecosystem

Designed for today's hybrid CSC photo and video shooters who are looking for maximum integration from their equipment and lightning quick transferability when switching between their photo and video heads, sliders, tripods, and gimbals. Empowered by Manfrotto's innovative Move Quick Release System which enables instant switching between setups while maintaining unwavering stability. Featuring the latest addition of dedicated products like Gimbal 300XM, Gim-Pod, and 496 Ball Head which make Move Ecosystem the go-to solution for CSC users.



**MVAQR PLATE**



MVAQR BASE



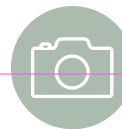
**MVAQR BASE**

055 PHOTO TRIPOD  
MT055CXPRO4



VIDEO TRIPOD ALUMINIUM  
MT502AM





## Motion Control

GENIE MINI II  
SY0033-0001



GENIE II LINEAR  
SY0038-0003



PAN TILT KIT  
SYKIT-0040H



GENIE II PAN TILT  
SY0031-0001



## Stabilizer



MODULAR GIMBAL 300XM  
MVG300XM

MAGIC CARPET CARBON FIBRE  
SYKIT-0015H



GIM-POD  
MVGBF-CFSSKIT



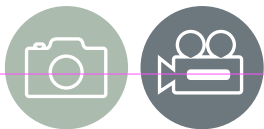
GIMBOOM  
MVGBF-CF

GIMBOOM  
CONNECTOR  
MVGBF-CFAC



635 FAST SINGLE TRIPOD  
MVTSGFCUS





# Lighting Stands



## 5001B-1 **BLACK ALU NANO STAND**

Aluminium stand. 5 sections, 4 risers. Ø: 25, 22, 19, 16, 13mm. Solid flat legs 15x5mm. An ideal stand for kits due to its compact design.



49cm



190cm



48cm



100cm



0,93kg



1,5kg



Type 19  
+ Adapter Art. 015



## 5002BL **NANO PLUS STAND**

Aluminium stand, 5 sections, 4 risers. Ø29.5, 26, Ø22.4, 19, 16 mm. Solid flat legs, 15cm x 6mm. Ideal for the travelling creative using slightly heavier portable lights and modifiers that are too heavy for the original Nano stand.



52cm



207cm



52cm



92cm



1,35kg



4kg



Type 19



## MS0490A-1 **NANO POLE STAND**

Aluminum stand, compact stand with 5 sections, 4 risers. The column can be detached from the base and used as a boom.



49cm



195cm



49cm



100cm



1,07kg



1,5kg



Type 19



## MS0490C **CARBON NANOPOLE STAND**

5 sections, 4 risers. Ø25, 22, 19, 16, 13mm. Solid flat legs, 15cm x 5mm. Detachable centre column for use as a boom. Ideal for the creative who is keen to travel light and stay portable whilst not compromising on the quality or stability of their lighting support.



50cm



197cm



50,8cm



100cm



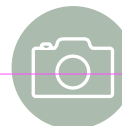
0,75kg



1,5kg



Type 19



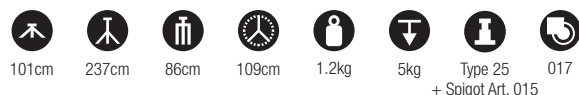
**1051BAC**  
**BLACK ALU AIR CUSHIONED MINI COMPACT STAND**

Aluminium stand, air cushioned. 4 sections, 3 risers.  
Ø: 25, 22, 19, 16mm. Leg Ø: 19mm.



**1052BAC**  
**BLACK ALU AIR CUSHIONED COMPACT STAND**

Aluminium stand, air cushioned. 3 sections, 2 risers.  
Ø: 25, 22, 19mm. Leg Ø: 19mm.



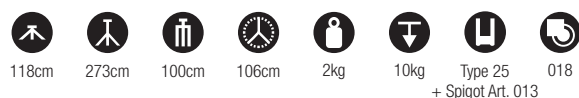
**1004BAC BLACK ALU AIR CUSHIONED MASTER STAND**

Aluminium stand, air cushioned. 4 sections, 3 risers.  
Ø: 35, 30, 25, 20mm. Leg Ø: 22mm.



**1005BAC BLACK ALU AIR CUSHIONED RANKER STAND**

Aluminium stand, air cushioned. 3 sections, 2 risers.  
Ø: 35, 30, 25mm. Leg Ø: 22mm.



Manfrotto's innovative Quick Stack System allows for multiple stands of the same type to be neatly and securely clipped together for storage in the studio and for transportation when working on location supporting your creativity by ensuring your lighting support is always on hand and you can be set up within moments.





# Boom Stand

# Wind up Stand



## 420B BLACK ALU COMBI-BOOM STAND WITH SANDBAG

Aluminium stand. Supplied with sandbag counterweight (empty) for maximum stability and smoothness.  
4 sections, 3 risers. Ø: 35, 30, 25, 20mm. Leg Ø: 22mm.  
Min extension boom: 19cm Max extension boom: 191cm  
Maximum load at boom full extension: 2kg with counterweight.



131cm



392cm



113cm



109cm



2.7kg



9kg



0.9kg@392cm



018



Type 25 + Spigot Art. 013

## 087NWB BLACK STEEL WIND UP STAND



Black chrome steel stand with geared column.  
2 risers extend simultaneously at an elevation of 4.4cm per handle turn.  
Safety cable ensures simultaneous retrieval of all sections.  
3 sections, 2 risers. Ø: 55, 45, 38mm. Leg Ø: 30mm. 1 levelling leg.



167cm



370cm



181cm



128cm



21.4kg



30kg

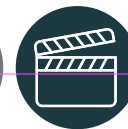


30kg@370cm



Type 14 104, 104G, 374-10





# Lighting Booms



425B

## BLACK MEGA BOOM (STAND NOT INCLUDED)

Largest boom in the range, remote control of pan, tilt and rotation of laminar plus geared telescopic extension.

Combination of black zinc steel and black anodised aluminium tubes. Supplied with carrying bags.

2 sections (Ø: 45, 55mm).

Folded length: 220cm.

Minimum extension from stand attachment: 50cm.

Maximum extension from stand attachment: 320cm.

\* Load: 6kg at maximum extension with 30kg of counterweight.

30kg at minimum extension with 30kg of counterweight.

Suggested stands: Wind Up series.



15kg



6kg-30kg\*



16mm  
/28mm



28mm stand  
attachment



Product in use

085BSL

## BLACK LIGHT BOOM 35 (STAND NOT INCLUDED)

Ø 35mm. 3 section boom arm complete with Pivoting Clamp 123, counterweight G-Peso 022, cable clips and locking key.

Weight: 2.2kg, boom only.

Dismantled length: 100cm.

Assembled length: 280cm.

Minimum extension from stand attachment: 10cm.

Maximum extension from stand attachment:

250cm.

Load: 6kg at maximum extension with 7kg of counterweight.



2.2kg



6kg



Type 25  
+ Spigot  
Art. 013



28mm stand  
attachment



Product in use

085BS Not illustrated

## BLACK LIGHT BOOM 35 (STAND INCLUDED)

Ø 35mm 3 sections boom arm complete with Pivoting Clamp 123, counterweight G-Peso 022, Cine Stand with casters, cable clips and locking key.

Weight: 2.2kg, boom only.

Dismantled length: 100cm.

Assembled length: 280cm.

Minimum extension from stand attachment: 10cm.

Maximum extension from stand attachment:

250cm.

Load: 6kg at maximum extension with 7kg of counterweight.



16.4kg



6kg



Type 25  
+ Spigot  
Art.013



28mm stand  
attachment

025BS Not illustrated

## BLACK SUPER BOOM (STAND INCLUDED)

Ø 35mm 1 section boom arm complete with Pivoting Clamp 123, counterweight G-Peso 022, Cable Clips and Cine Stand 008 with casters.

Weight: 4.1kg, boom only.

Remote control of lighting movement: 270cm long.

Minimum extension from stand attachment: 24cm.

Maximum extension from stand attachment:

100cm.

Load: 5kg at maximum extension with 7kg of counterweight.



21kg



5kg



Type 25  
+ Rapidapter  
Art. 014-38



28mm stand  
attachment

025BSL

## BLACK SUPER BOOM (STAND NOT INCLUDED)

Ø 35mm. 1 section boom complete with Pivoting Clamp 123, counterweight G-Peso 022, cable clips.

Weight: 4.1kg, boom only.

Remote control of lighting movement:

270cm long.

Minimum extension from stand attachment:

24cm.

Maximum extension from stand attachment:

100cm.

Load: 5kg at maximum extension with 7kg of counterweight.



4.1kg



5kg



Type 17  
+ Rapidapter  
Art. 014-38



28mm stand  
attachment



Product in use

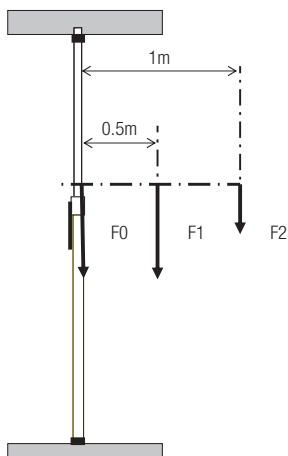


# Autopole

Unique cantilever single action locking system exerts pressure to securely wedge the rubber suction cup ends in place. Cantilever system incorporates safety lock. Floor to ceiling, or wall to wall fixing for strong vertical or horizontal support of lighting.

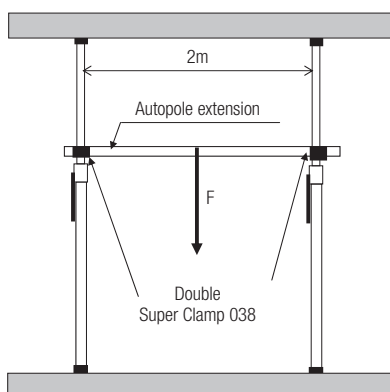
## Loading limits

The following figures are valid for use with rigid floors and ceilings, and with the protection-cups mounted on the suction-cups.



MODELS	Load (kg)		
	F0	F1	F2
032	30	30	15
076	30	30	15
077	30	30	15
432-2.7	24	24	12
432-3.7	24	24	12

F0: maximum axial load - F1: maximum load with 0.5m arm - F2: maximum load with 1m arm



MODELS	Load (kg)	
	F	
032	20	
076	20	
077	20	
432-2.7	20	
432-3.7	20	

## 077 AUTOPOLE **B**

Extends from 100cm to 170cm. Pole Ø: 45mm and 40mm.



1.5kg

## 076 AUTOPOLE **B**

Extends from 150cm to 270cm. Pole Ø: 45mm and 40mm.



1.83kg

## 032 AUTOPOLE **B**

Extends from 210cm to 370cm. Pole Ø: 45mm and 40mm.



2.2kg



077



076

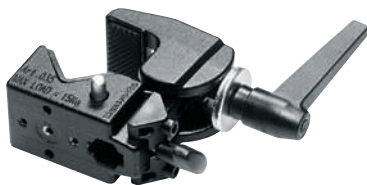
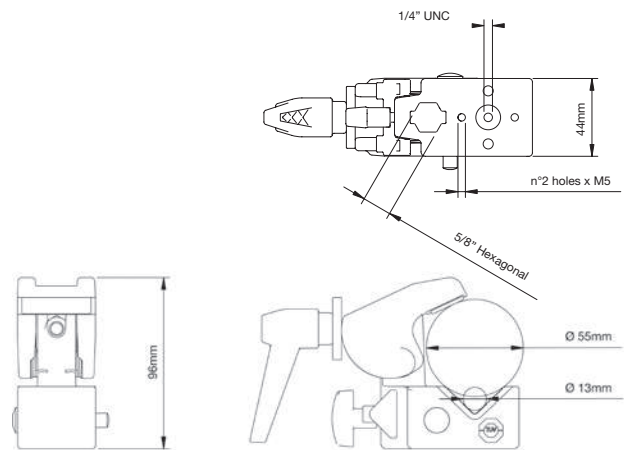


032



# Clamps

Manfrotto Super Clamp is the most versatile single piece of light grip gear. Frictionlined screw-operated jaws grip everything from 13mm to 55mm. Hexagonal socket with unique secondary safety lock system holds items in place even if the screw lock comes undone. Supplied with a wedge to square off the jaws for mounting to flat surfaces. This masterpiece of practicality and solidity is the most widely copied clamp in the world! Manfrotto Nano Clamp and Pico Clamp are the natural extension of the range; small but robust, they represent the ideal solution to grip loads to bars with diameter down to 8mm.



## 035 SUPER CLAMP



Ideal clamp for photographic application. Ergonomic lever to securely lock clamping position.



0.41kg



15kg



## 038 DOUBLE SUPER CLAMP

Set of two Super Clamps fastened together at fixed right angle to provide extra strength support for tubes or bars.



0.83kg



## MC1990A PICO CLAMP

Manfrotto Pico Clamp is an extra-small clamp with versatile use. It offers the possibility to safely attach the equipment to very thin bars, having a diameter from 8 to 15 mm.



0.07kg



2kg



1/4" - 3/8" attachment type



## 635 QUICK ACTION SUPER CLAMP

The rapid action locking jaw has also been applied to the most well known clamp in the world, the original Super Clamp. These modifications allow us to keep its extreme versatility adding unrivaled speed in locking and unlocking. Supplied with wedge to allow the clamp to fit on flat surface.



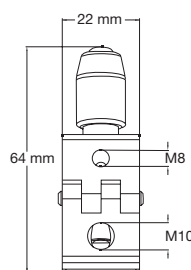
0.47kg



15kg

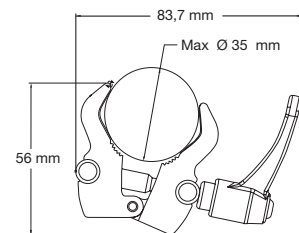
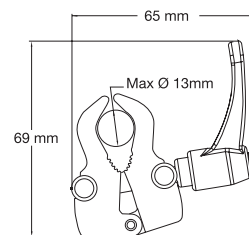


16mm hexagonal + M5 & 1/4" threads



## 386B-1 NANO CLAMP

Its the new Manfrotto small size clamp. Its reduced size is the most important plus: the Nano Clamp is 4kg of payload in 110 grams of weight and the right size for any pocket.





#### 013 SPIGOT ADAPTER

Universal 16mm spigot with double male thread 1/4" and 3/8".



0.07kg



#### 118 SHORT 16MM SPIGOT WITH 1/4" + 3/8" SCREW

Universal short 16mm spigot with double male thread 1/4" and 3/8".



0.04kg



#### 119 ADAPTER SPIGOT 1/4" + 3/8" FEMALE THREADS

Universal short 16mm spigot with double female thread 1/4" and 3/8".



0.032kg



#### 036-38 LIGHTING STUD 3/8"

Plugs into Super Clamp 035 for accessories or connecting 2 Super Clamps 035 allowing rotation. 16mm stud with 3/8" male thread.



0.07kg



#### 036-14 LIGHTING STUD 1/4"

Same as 036-38 with 1/4" male threads.



0.07kg



#### 037 CAMERA STUD

Plugs into Super Clamp 035 socket. To mount cameras, directly or with a camera head. 3/8" and 1/4" threads.



0.04kg



#### 061 JOINING STUD

Connects 2 Super Clamps 035 with 6 step fixed rotation.



0.025kg



#### 061RA JOINING STUD RA

Connects 2 Super Clamps 035 at right angles or 45° steps.



0.025kg



#### 066 DOUBLE FEMALE THREAD STUD

Plugs into Super Clamp 035 to provide either a 3/8" or 1/4" female thread fixing.



0.025kg



#### 264 ROUNDED 16MM LIGHTING STUD M10

Rounded stud for stirrup's fixture for a rapid connection to a Super Clamp.



0.072kg



#### 174 HEXAGONAL 16MM LIGHTING STUD M10

Hexagonal Lighting Stud for stirrup's fixture for a rapid connection to a Super Clamp.



0.062kg



#### 066BT STUD FOR STIRRUP

16mm stud with female thread M10. It has been specifically designed to mount it on a stirrups fixture and easily connect it to a Super Clamp. Designed to be tightly locked with a wrench.



0.048kg



#### 133B EXTENSION BAR

Used to fix 2 Super Clamps 035 at a distance of 15cm from each other. Length 16.5cm.



0.1kg



#### 036MR LIGHTING STUD MR

Plugs into Super Clamp 035 for lighting fixtures, Grip Heads or connect 2 Super Clamps 035 with 360° rotating capability.



0.048kg

#### C1000 DROP CEILING SCISSOR CLAMP

Drop ceiling scissor clamp



#### 147 **SHORT SPIGOT ADAPTER 1/4"-3/8"**

Short spigot adapter 1/4" - 3/8".



0.05kg



#### 042 **EXTENSION ARM**

Plugs into Super Clamp 035 socket. Length: 19.5cm.



0.21kg



8kg



Type 1



+ Spigot Art. 013



#### 176 **MINI U HOOKS**

Set of two Mini U Hooks.



0.1kg



#### 5039 **OFFSET U HOOK**

The unique Offset U Hook is the perfect partner for the Manfrotto Super Clamp, ideal for supporting power packs for lighting in the studio or on location.



0.16kg



15kg



16mm Hexagon Stud  
(Super Clamp AR)



#### 125 **SHORT SPIGOT ADAPTER 3/8"-3/8"**

Short spigot adapter 3/8" - 3/8".



0.05kg



#### 203 **MINI EXTENSION ARM**

Fits into Mini Clamp 171 socket. Length: 12cm.



0.15kg



5kg



12.5mm hole



#### 039 **U HOOKS**

Set of two cross bar holders. Width: 40mm



0.16kg





# Arms



## 143N MAGIC ARM

Articulated arm, without accessories, with centre level to lock all 3 movements.



1,07kg



16mm with 1/4" female attachment



3kg



16mm with 3/8" female attachment



## 143A MAGIC ARM WITH CAMERA BRACKET

Magic Arm with camera bracket only.



1,07kg



16mm with 1/4" female attachment



3kg



16mm with 3/8" female attachment + Camera Bracket Art. 143BKT



## 143 MAGIC ARM KIT

Articulated arm with centre lever to lock all 3 movements. Length: 53cm. Supplied with: Camera/Umbrella Bracket 143BKT, Super Clamp 035, Backlite Base 003.



2,55kg



16mm with 1/4" female attachment



3kg



16mm with 3/8" female attachment + Camera Bracket Art. 143BKT



## 143RC MAGIC ARM WITH QUICK RELEASE PLATE

Your extra arm in the studio! One lever locks three pivot points. Supplied with a quick release camera plate with secondary safety lock based on the 200PL-14 system. Ideal for mounting a camera or a camcorder exactly at the angle you need it. Fits any 5/8"; female sockets, works especially well with 035 Super Clamp



1,5 kg



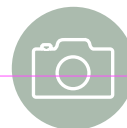
16mm stud with 3/8" female attachment



4kg



1/4" thread quick release plate and 200PL-14 mount



244

### **VARIABLE FRICTION ARM WITH CAMERA BRACKET**

Features as 143A, but a large locking knob takes the place of the cam-lever. Variable friction and locking of arm obtained by adjusting knob. Comes complete with Camera/Umbrella Bracket 143BKT only.



1,09kg



16mm with 1/4"  
female attachment



3kg



16mm with 3/8" female attachment  
+ Camera Bracket Art.143BKT



244RC

### **VARIABLE FRICTION ARM WITH QUICK RELEASE PLATE**

Features as 143A, but a large locking knob takes the place of the cam lever. Variable friction and locking of arm obtained by adjusting knob. Supplied with a quick release camera plate with secondary safety lock based on the 200PL-14 system. Ideal for mounting a camera or a camcorder exactly at the angle you need it.



1,5 kg



16mm stud with 3/8"  
female attachment



4kg



1/4" thread quick release plate  
and 200PL-14 mount



### **244N VARIABLE FRICTION ARM**

Friction Arm with variable friction and locking of arm obtained by adjusting knob.



1,09kg



16mm with 1/4"  
female attachment



3kg



16mm with 3/8"  
female attachment



Imagine More



#### 244MINI **MINI FRICTON ARM**

24cm friction arm with interchangeable 1/4" attachments and additional 3/8" adapter included.



3kg



0,44kg



#### 244MICRO **MICRO FRICTON ARM**

15cm friction arm with interchangeable 1/4" attachments and additional 3/8" adapter included.



3kg



0,22kg



#### 244MICRO-AR **MICRO FRICTON ARM WITH ANTI ROTATION**

15cm friction arm with interchangeable 3/8" anti-rotation attachments and additional 3/8" adapter included. The anti-rotation system is compatible with Manfrotto products: Digital Director and 386B-1 Nano Clamp.



3kg



0,24kg



#### 244MICRO-AA

#### **244 MICRO ARM W/ ARRI STYLE AND ANTI SLIP ADPTS**

15cm friction arm with interchangeable 3/8" Arri style Anti-Rotation Adapter and 1/4" Anti-Slip Adapter.



0.25kg



3kg



#### 244ADPT14AS **1/4" ANTI SLIP ADAPT**

1/4" Anti-Slip Adapter Accessory. Featuring a 1/4" thread and anti slip rubber texture upper. Compatible with: 244Mini, 244Micro, 244Micro-AR, 244MICRO-AA, 244MicroKit.



#### 244ADPT58 **5/8" ADAPTERS**

Two 5/8" adapters accessories compatible with the following friction arms: 244Mini, 244Micro, 244Micro-AR, 244MicroKit, 244MICRO-AA.



#### 244ADPT3814 **3/8" AND 1/4" ADAPTERS**

3/8" and 1/4" adapters accessories compatible with the following friction arms: 244Mini, 244Micro, 244Micro-AR, 244MicroKit, 244MICRO-AA.

#### 244MICROKIT **MICRO FRICTON ARM WITH NANO CLAMP**

15cm friction arm with interchangeable 3/8" anti-rotation attachment and 1/4" attachment and Nano Clamp included. The anti-rotation system is compatible with Manfrotto products: Digital Director and 386B-1 Nano Clamp.



3kg



0,31kg

#### 244ADPT38AA **3/8" ARRI STYLE ANTI-ROTATION ADAPT**

3/8" Arri style Anti-Rotation Adapter Accessory. Featuring a reversible plate to allow use of the thread without the two locating pins. Compatible with: 244Mini, 244Micro, 244Micro-AR, 244MICRO-AA, 244MicroKit.



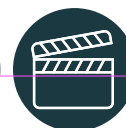
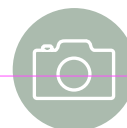
#### 244ADPT38AR **3/8" ANTI-ROTATION ADAPTER**

Anti-rotation adapter accessory compatible with the following friction arms: 244Mini, 244Micro, 244Micro-AR, 244MicroKit, 244MICRO-AA. The Anti-rotation system is compatible with Manfrotto products: Digital Director and 386B-1 Nano Clamp.



#### 244ADPT-HS **HOT-SHOE ADAPTER**

Hot-shoe adapter accessory compatible with the following friction arms: 244Mini, 244Micro, 244Micro-AR, 244MicroKit, 244MICRO-AA.



## SINGLE ARTICULATED ARMS: 2 & 3 SECTIONS

A more versatile version with telescopic features that make this product even more compact than before. Two available versions – at two and three sections- in order to ensure broad range of length, from 605 to 850mm.

Code	Sections	Top attachment	Bottom attachment	Max length	Max load at full extension	Weight
196AB-2	2	16mm spigot with 3/8" light attachment	16mm spigot (compatible with Super Clamp) with 1/4" thread	605mm	1.5kg	0.4kg
196AB-3	3	16mm spigot with 3/8" light attachment	16mm spigot (compatible with Super Clamp) with 1/4" thread	850mm	1kg	0.5kg
196B-2	2	camera bracket with 16mm spigot and camera attachment	16mm spigot (compatible with Super Clamp) with 1/4" thread	605mm	1.5kg	0.53kg
196B-3	3	camera bracket with 16mm spigot and camera attachment	16mm spigot (compatible with Super Clamp) with 1/4" thread	850mm	1kg	0.63kg



## DOUBLE ARTICULATED ARMS: 2 & 3 SECTIONS

Excellent performance, robustness, lightness and versatility... these are the features of the new double articulated arm range.

The 396 family has been developed to provide greater robustness than the 196 range and to support heavier loads (up to 5kg), though keeping versatility thanks to its extendable sliding arm system (extends up to 860mm), further enhanced by its quick lock system.

The new bottom attachment adds to the strength and versatility of the 396, with a spigot that combines both a hexagonal part, (for anti-rotation fixing to the Super Clamp system), and a universal adapter section, (for fitting to a wide range of stands, clamps and accessories).

Code	Sections	Top attachment	Bottom attachment	Max length	Max load at full extensions	Weight
396AB-2	2	16mm spigot with 3/8" light attachment	Double-anchored 16mm hexagonal/universal spigot	625mm	5kg	0.5kg
396AB-3	3	16mm spigot with 3/8" light attachment	Double-anchored 16mm hexagonal/universal spigot	860mm	4.5kg	0.79kg
396B-2	2	camera bracket with 16mm spigot and camera attachment	Double-anchored 16mm hexagonal/universal spigot	625mm	5kg	0.64kg
396B-3	3	camera bracket with 16mm spigot and camera attachment	Double-anchored 16mm hexagonal/universal spigot	860mm	4.5kg	0.9kg





Imagine More

# Pro Scrim

The Pro Scrim All In Ones are a collection of four lightweight professional light control kits that include all of the essential components required for creative image makers to take control of their lighting set-up by bouncing, diffusing and flagging the light source. Included is a lightweight frame, textile covers, grip heads, ears and a carry case. Pro Scrim is available in four sizes; small 1.1m x 1.1m (3.6 x 3.6ft), medium 1.1m x 2m (3.6 x 6.5ft), large 2m x 2m (6.5 x 6.5ft) and extra large 2.9m x 2.9m (9.5ft), all of which effortlessly fold down into their own rigid carry case with an impressive compact folded size of just 102 x 24 x 19cm (40.1 x 9.4 x 7.4in), making this range extremely transportable.



MLLC1101K

## PRO SCRIM ALL IN ONE KIT 1.1X1.1M SMALL

1x lightweight frame, 3x textile covers; (black, double-sided silver/white bounce and 1.25 stop diffuser), 1x grip head and carry case. Dimensions in case: height 240cm, width 190cm, depth 1025cm. weight in case 5.75kg.



MLLC1201K

## PRO SCRIM ALL IN ONE KIT 1.1X2M MEDIUM

1x lightweight frame, 3x textile covers; (black, double-sided silver/white bounce and 1.25 stop diffuser), 2x grip heads, 2x ears and carry case. Dimensions in case: height 240cm, width 190cm, depth 1025cm. weight in bag 7.45kg.



MLLC2201K

## PRO SCRIM ALL IN ONE KIT 2X2M LARGE

1x lightweight frame, 3x textile covers; (black, double-sided silver/white bounce and 1.25 stop diffuser), 2x grip heads, 2x ears and carry case. Dimensions in case: height 240cm, width 190cm, depth 1025cm. weight in bag 9.9kg.

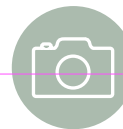


MLLC3301K

## PRO SCRIM ALL IN ONE KIT 2.9X2.9M EXTRA LARGE

1x lightweight frame, 2x textile covers; (black and 1.25 stop diffuser), 2x grip heads, 2x ears and carry case. Dimensions in case: height 240cm, width 190cm, depth 1025cm. weight in bag 11.4kg.





# Chroma Key FX

The Chroma Key FX Background is Manfrotto's all in one portable Chroma Key background solution, tailored to meet the needs of the most demanding content creators, videographers and cinematographers working on the move. At an impressive size of 4.2m (13'7") wide and 3m (9'8") tall, the Manfrotto Chroma Key FX background is the largest reusable all in one Chroma Key background kit available. The large working area makes it ideal for use when shooting wide and low camera angles, as well as moving subjects that would otherwise prove unachievable with a smaller surface. The ability to reuse this kit time and time again make this kit an invaluable asset with a return on investment after just one or two uses when compared to a non-re-usable build.



## MLBG4301KG **MANFROTTO CHROMA KEY FX 4X2.9M BACKGROUND KIT GREEN**

Includes three ultra-fast assembly aluminium frames, one clip on Chroma Key Green cover, four hinge clips, two tensioning bars and one soft carrying bag. Dimensions in bag: height 30cm, width 103cm, depth 30cm. weight in bag 9.8kg.



## MLBG4301CG **MANFROTTO CHROMA KEY FX 4X2.9M BACKGROUND COVER GREEN**



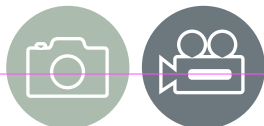
## MLBG4301KB **MANFROTTO CHROMA KEY FX 4X2.9M BACKGROUND KIT BLUE**

Includes three ultra-fast assembly aluminium frames, one clip on Chroma Key Blue cover, four hinge clips, two tensioning bars and one soft carrying bag. Dimensions in bag: height 30cm, width 103cm, depth 30cm. weight in bag 9.8kg.



## MLBG4301CB **MANFROTTO CHROMA KEY FX 4X2.9M BACKGROUND COVER BLUE**





# Reflectors & Diffusers

## HaloCompact Reflector and Diffuser

The HaloCompact boasts a patent pending design concept that makes the everyday reflector and diffuser panel more portable than ever! Unlike many traditional reflector/diffuser panels that incorporate a steel rim pop up design, the 82cm (32") HaloCompact is constructed using Manfrotto's new innovative RapidExoFrame™ technology.

The collapsible lightweight aluminium frame quickly slots together and the reflector or diffuser fabric simply clips onto the frame. The cleverly designed RapidExoFrame™ construction allows the frame to breakdown into small multiple sections and along with the folded fabric packs into a carry case measuring only 6.5 x 27 x 6.5cm (2.5" x 10.5" x 2.5") weighing only 390g (reflector and case). The ultra-compact folded dimensions make the HaloCompact the perfect 'always with you' solution for imagemakers on the move.

The HaloCompact also features an ergonomically designed handle so it can easily be held and accurately positioned with one hand. The handle also incorporates a very useful 1/4" thread (plus a 1/4" to 1/4" adaptor), enabling it to be easily attached to various different support systems, to offer secure positioning further away from camera position.

PATENT  
PENDING



HaloCompact Reflector Silver/White



HaloCompact Diffuser 2 Stop



Ultra-compact folded dimensions



Ergonomically designed handle with useful 1/4" thread

### Features and Benefits

- Ultra compact when folded down
- Weighs only 390g
- Incorporates a 1/4" thread in the handle
- Fits easily in a camera bag

### Specifications

#### HaloCompact 82cm (32")

	Code
Reflector Silver/White	LL LR3300
Reflector Sunlite/Soft Silver	LL LR3310
Diffuser 2 Stop	LL LR3301
Diffuser Soft Silver	LL LR3320

#### HaloCompact Covers 82cm (32")

	Code
Reflector Cover Silver/White	LL LR3302
Reflector Cover Sunlite/Soft Silver	LL LR3311
Diffuser Cover 2 Stop	LL LR3303
Diffuser Cover Soft Silver	LL LR3321

Silver / White



Sunlite/Soft Silver



Diffuser, 2 Stops



Diffuser Soft Silver



## HaloCompact Plus

Also available, the HaloCompact Plus which boasts a cover size of 98cm (38") – a 46% larger surface area than the original HaloCompact.

Available in a choice of two popular surfaces:

- Two-stop diffuser
- Silver and white reflector

### Specifications

#### HaloCompact 98cm (38")

	Code
HaloCompact Plus Cover 98cm (38") 2 Stop Diffuser	LL LR3334
HaloCompact Plus Cover 98cm (38") Silver/White	LL LR3332

#### HaloCompact Covers 98cm (38")

	Code
HaloCompact Plus Diffuser 98cm (38") 2 Stop	LL LR3333
HaloCompact Plus Reflector 98cm (38") Silver/White	LL LR3331

Silver / White



Diffuser, 2 Stops





With HaloCompact Diffuser



Without HaloCompact Diffuser



# Reflectors & Diffusers

## Skylite Rapid

The Skylite Rapid is the go to solution for location imagemakers who need to diffuse or reflect their light source in the most demanding situations. The Skylite Rapid's lightweight, rapid assembly, collapsible aluminium rigid frame offers ultimate stability even in windy conditions, whilst the clip on covers simply clip in place and offer a complete range of diffusion and reflective surfaces.

Skylite Rapid frames, covers and accessories are all available separately, so you can mix and match as you choose. For greater value, kits are also available, which collapse down into a neat, compact and very portable rigid carry case.

*Note: All Skylite frames are compatible with the original Skylite covers and Skylite Rapid covers.*

### Features and Benefits

- Lightweight aluminium frame
- Resistant to rust so ideal for outdoor use
- Internal elasticated cord running through
- Rapid clip on covers
- Kits include rigid carry case



Silver / White



Black / White



Sunfire / White



Diffuser 0.75 Stop



Diffuser 1.25 Stop



Black Velour



### Specifications

Skylite Rapid Covers	Small Covers 1.1m x 1.1m (3'6" x 3'6") Code	Medium Covers 1.1m x 2m (3'6" x 6'6") Code	Large Covers 2m x 2m (6'6" x 6'6") Code	Midi Covers 1.5m x 1.5m (5' x 5') Code	Extra Large Covers 3m x 3m (10' x 10') Code
Black / White	LL LR81121R	LL LR81221R	LL LR81521R	LL LR82221R	
Sunfire / White	LL LR81106R	LL LR81206R		LL LR82206R	
Silver / White	LL LR81131R	LL LR81231R	LL LR81531R	LL LR82231R	
1.25 Stop Diffuser	LL LR81107R	LL LR81207R	LL LR81507R	LL LR82207R	LL LR83307R*
0.75 Stop Diffuser	LL LR81101R	LL LR81201R	LL LR81501R	LL LR82201R	LL LR83301R
Black Velour	LL LR81102R	LL LR81202R		LL LR82202R	LL LR83302

### Skylite Rapid Accessories

Skylite Rapid Accessories	Code
Skylite Rapid Griphead	LL LA8446
Skylite Rapid Crossbar Handle	LL LA8449
Rigid Case 78cm x 19cm x 14cm	LL LRCASE775
Rigid Case 103cm x 19cm x 14cm	LL LRCASE1025
Aluminium Frame Support Kit	LL LA8450

\*The 1.25 stops is manufactured using two panels with a single seam running through the centre of the diffuser joining the panels.

Skylite Rapid Frames	Weight	Size	Code	Skylite Rapid Kits	Silver/White Reflector	1.25 Stop Diffuser	Frame	Rigid Case	Code
Skylite Rapid Frame Small	1.1kg (2.4lb)	1.1m x 1.1m (3'6" x 3'6")	LL LR811	Skylite Rapid Small Kit	1	1	1	1	LL LR81143RC
Skylite Rapid Frame Medium	1.6kg (3.5lb)	1.1m x 2m (3'6" x 6'6")	LL LR812	Skylite Rapid Medium Kit	1	1	1	1	LL LR81243RC
Skylite Rapid Frame Midi	1.5kg (3.3lb)	1.5m x 1.5m (5' x 5')	LL LR815	Skylite Rapid Midi Kit	1	1	1	1	LL LR81544R
Skylite Rapid Frame Large	2.1kg (4.6lb)	2m x 2m (6'6" x 6'6")	LL LR822	Skylite Rapid Large Kit	1	1	1	1	LL LR82243RC
Skylite Rapid Frame Extra Large	3kg (6.6lb)	3m x 3m (10' x 10')	LL LR833	Skylite Rapid Extra Large Kit		1	1	1	LL LR83344R





LL LA8446 Skylite Rapid Griphead



Skylite Rapid Kit



The Skylite Rapid cover simply clips to the frame



Skylite Rapid Rigid Case





# Colour and Exposure Control

## EzyBalance

**PATENTED**

The EzyBalance is a handy double-sided 'pop up' 18% grey/white card, which simplifies the complex technical issues surrounding exposure and colour correction when working in different lighting conditions.

A unique focusing target enables the camera to focus on the card and take the necessary readings. A waterproof version is also available for scuba divers. Available in 3 sizes.

### Features and Benefits

- Colour correction, pre and post capture
- Exposure control, pre and post capture
- Accurate colour rendition
- Collapsible, durable and cleanable
- Double sided
- Unique focusing target
- Collapses to a third of its original size

### Specifications

EzyBalance	Code
30cm (12") 18%	LL LR1250
50cm (20") 18%	LL LR2050
75cm (30") 18%	LL LR3050



EzyBalance used to correct the light on the subject from 'Daylight' LED Key light and create a warm light effect from the Tungsten light source behind.



EzyBalance 18%





## StudioLink Swatches



Chroma Key Green



Chroma Key Blue

## StudioLink

The StudioLink Background is a unique modular Chroma Key background system for use in the studio or out on location. Once assembled, multiple 3 x 3m (10' x 10') StudioLink screens can be joined together using the StudioLink Chroma Key Connection Kit (available separately) to form various configurations; side by side in a straight line or as a curvature up to the point of creating a full 360° enclosure. In addition, screens singularly or side-by-side can be rigged, (using standard grip equipment), one above the other to create a second tier of screens.

### Features and Benefits

- Reversible
- Chroma Key rim tape as standard
- Crease resistant fabric
- Fast to set up and dismantle
- For inside and outside use
- Collapses to a third of its original size

### Specifications

StudioLink	3m (10')
Chroma Key Green Screen Kit	LL LR83350
Chroma Key Blue Screen Kit	LL LR83352

StudioLink Covers	3m (10')
Chroma Key Green Cover	LL LR83351
Chroma Key Blue Cover	LL LR83353

StudioLink Connection Kits	3m (10')
Chroma Key Green Connection Kit	LL LR83354
Chroma Key Blue Connection Kit	LL LR83355
Chroma Key Green Connection Kit	LL LR8334



## StudioLink Accessories

### Specifications

#### StudioLink Accessories

Chroma Key Green Connection Kit	LL LR8334
Aluminium Frame Support Kit	LL LA8450
Skylite Rapid Griphead	LL LA8446



Chroma Key Green Connection Kit LL LR8334

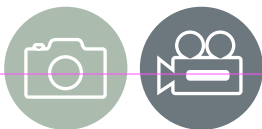


Aluminium Frame Support Kit LL LA8450  
(sand bag not included)



Skylite's special griphead allows it to be fixed to stands and tilted as required. LL LA8446





# Chroma Key Backgrounds

## Panoramic Chroma Key Backgrounds

The Panoramic background is one of our widest, crease free textile surfaces. It features a collapsible three panel aluminium framework, creating a useful self-supporting wraparound structure. The Chroma Key Green fabric cover simply clips to the framework. The background folds down neatly into its own case and fits easily into a car.

### Features and Benefits

- Up to 4m (13') wide and 2.3m (7'5") high
- Self-supporting
- Weighs only 9kg (19.8lb)
- Packs into a 100cm x 30cm x 35cm (39" x 12" x 13.5") bag

### Specifications

Panoramic Background 4m (13')	Code
Panoramic Background - Chroma Key Green	LL LB7622
Panoramic Background - Chroma Key Blue	LL LB7943
Panoramic Background Cover - Chroma Key Green	LL LB7626
Panoramic Background Cover - Chroma Key Blue	LL LB7963
Panoramic Background Connection Kit 2.3m (7'5") Chroma Key Green	LL LB7945
Panoramic Background Connection Kit 2.3m (7'5") Chroma Key Blue	LL LB7944

Panoramic Background Accessories	Code
Aluminium Frame Support Kit	LL LA8450



## Panoramic Chroma Key Green Swatch



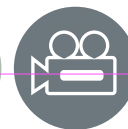
Chroma Key Green



Chroma Key Blue







## Chroma Key Collapsible Backgrounds

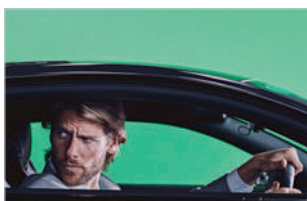
A range of collapsible, reversible, plain coloured textile backgrounds. Available in different sizes, a simple solution for flat plain coloured backgrounds, the seamless paper effect but in a collapsible portable format! Two great backgrounds in one with a pop up construction that provides today's image makers with a truly portable solution for easy transportation. Available in Chroma Key green and Chroma Key blue.

### Features and Benefits

- Crease resistant
- Chroma Key rim tape
- Collapses to a third of its original size
- Available in green and reversible blue/green
- Comes with carry case

### Specifications

Chroma Key Collapsible Background	Size	Code
Chroma Key Blue/ Green Reversible	1.5m x 1.8m (5' x 6')	LL LC5687
	1.8m x 2.1m (6' x 7')	LL LC5987
Chroma Key Green	1.8m x 2.1m (6' x 7')	LL LC5981
	1.8m x 2.75m (6' x 9')	LL LC6981



## Chroma Key Collapsible Swatches



Chroma Key Green



Chroma Key Blue



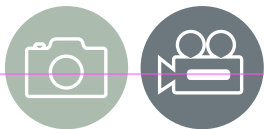
Magnetic Background Support LL LB1120



Magnetic Background Support LL LB1120







# Portable Backgrounds

## Vintage Collapsible Backgrounds

The Vintage Collapsible Background range boasts a choice of versatile and subtly textured surfaces; great for interview style filming. These 1.5 x 2.1m (5' x 7') reversible backgrounds provide a very fashionable, timeless hand painted look that subtly complements the chosen subject. Two great backgrounds in one with a collapsible pop up construction that provides today's image-makers with a truly portable solution for easy transportation.

### Features and Benefits

- Timeless hand painted look
- Subtle textured surface
- Reversible
- 6 different colour tones
- Collapses to a third of its original size
- Comes with carry case

### Specifications

#### Vintage Collapsible Backgrounds 1.5 x 2.1m (5' x 7')

Tobacco/Olive	LL LB5705
Smoke/Concrete	LL LB5745
Joe McNally Ironworks	LL LB5750JM
Ink/Sage	LL LB5720
Walnut/Pewter	LL LB5721
Aubergine/Crimson	LL LB5722



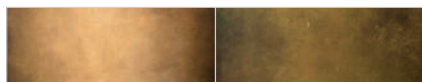
Magnetic Background Support LL LB1120



Tobacco/Olive LL LB5705

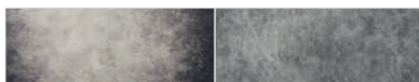
Some camera sensors may interpret the colours used on our printed backgrounds differently.

## Vintage Collapsible Background Swatches



Tobacco LL LB5705

Olive LL LB5705



Smoke LL LB5745

Concrete LL LB5745



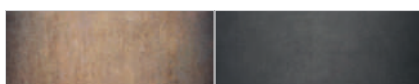
Joe McNally Ironworks  
LL LB5750JM

Joe McNally Ironworks  
Monochrome LL LB5750JM



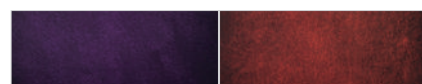
Ink LL LB5720

Sage LL LB5720



Walnut LL LB5721

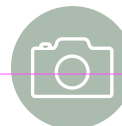
Pewter LL LB5721



Aubergine LL LB5722

Crimson LL LB5722





## EzyFrame

The EzyFrame Vintage Background 2 x 2.3m (6'7" x 7'5") is a large format collapsible background concept offering a much larger shooting area for our highly successful vintage textured background surfaces, currently available as 1.5 x 2.1m (5' x 7') collapsible 'pop-up' style backgrounds. The extra width and height combined with the squarer format offers a substantially increased surface area allowing the photographer to pose multiple subjects and the use of props. Ideal for family portraits, more animated action poses, fashion and commercial shoots.

The EzyFrame Vintage Background features the tried and tested aluminium frame and clip on cover design used on our highly successful Skylite panels, Panoramic backgrounds and the newly launched StudioLink Chroma Key solutions. Assembled in a matter of minutes, the EzyFrame Vintage background and cover packs down into a small rigid carry case measuring only 103cm x 19cm x 14cm, making it extremely portable.

### Features and Benefits

- Aluminium frame
- Highly portable and offers large background coverage
- EzyFrame covers clip easily onto the frame for an impressively taut finish
- Interchangeable with other EzyFrame covers



## EzyFrame Swatches



Tobacco



Smoke



Olive



Concrete



Aubergine



Crimson



Ink



Pewter



Sage



Walnut

### Specifications

EzyFrame Backgrounds	Code
Tobacco	LL LB7926
Olive	LL LB7924
Smoke	LL LB7928
Concrete	LL LB7930
Aubergine	LL LB7938
Crimson	LL LB7940
Ink	LL LB7922
Pewter	LL LB7936
Sage	LL LB7932
Walnut	LL LB7934

EzyFrame Cover	Code
Tobacco Cover	LL LB7927
Olive Cover	LL LB7925
Smoke Cover	LL LB7929
Concrete Cover	LL LB7931
Aubergine	LL LB7939
Crimson	LL LB7941
Ink	LL LB7923
Pewter	LL LB7937
Sage	LL LB7933
Walnut	LL LB7935
Kits and covers	

EzyFrame Accessories	Code
Aluminium Frame Support Kit	LL LA8450
Skylite Rapid Griphead	LL LA8446
Rigid Case 78cm x 19cm x 14cm	LL LRCASE775
Rigid Case 103cm x 19cm x 14cm	LL LRCASE1025

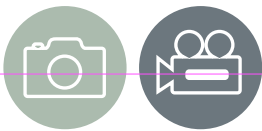


Skylite's special griphead allows it to be fixed to stands and tilted as required. LL LA8446



Aluminium Frame Support Kit LL LA8450





Classic Red Brick



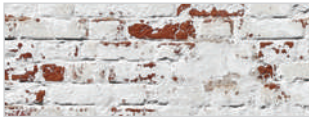
Painted White Brick



Rusty Metal



Derelict Wall



Distressed White Brick



Industrial Grey Brick



Plaster Wall



Wooden Fence

## Urban Collapsible Backgrounds

The urban collapsible background range allows you to create the outdoor look in an instant, whether you're in the studio or a client's home. Each double sided background has an unique urban feel and can quickly add a new dimension to your portrait sittings. No longer will you have to find locations or be controlled by the weather.

### Features and Benefits

- 4 different surfaces
- Reversible
- Create the location effect anywhere
- Collapsible to a third of its original size



Painted White Brick LL LB5707

### Specifications

Urban Collapsible Backgrounds	Size	Code
Classic Red Brick / Distressed White Brick	1.5 x 2.1m	LL LB5706
Painted White Brick / Industrial Grey Brick	1.5 x 2.1m	LL LB5707
Rusty Metal / Plaster Wall	1.5 x 2.1m	LL LB5713
Derelict Wall / Wooden Fence	1.5 x 2.1m	LL LB5715

Some camera sensors may interpret the colours used on our printed backgrounds differently.



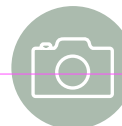
Distressed White Brick LL LB5706



Classic Red Brick LL LB5706



Industrial Grey Brick LL LB5707



## Plain Background Swatches



Black



Purple



Red



Grey



Blue



Pink



White

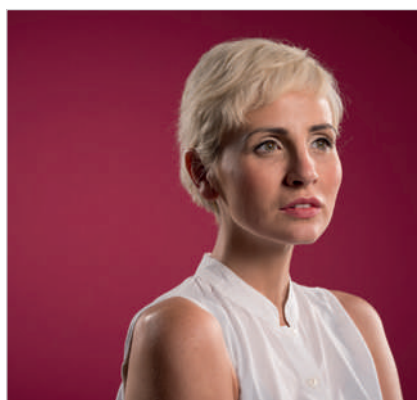
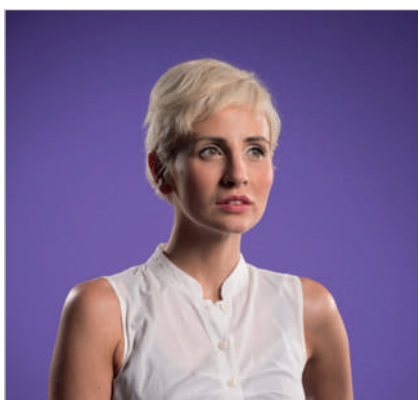
## Plain Collapsible Backgrounds

A range of collapsible, reversible, plain coloured backgrounds. In addition to the standard range of colour options, also available is choice of punchy, vibrant colours; offering a contemporary twist on traditional backgrounds.

A simple solution for flat plain coloured backgrounds, a great way to get the seamless paper effect, but in a collapsible portable format!

### Features and Benefits

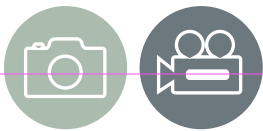
- Crease resistant
- Single colours
- Reversible
- Collapsible
- Ideal for passport, ID and corporate photos



### Specifications

Plain Collapsible Backgrounds	Size	Code
Blue / Pink	1.8m x 2.15m (6' x 7')	LL LB6751
Red / Purple	1.8m x 2.15m (6' x 7')	LL LB6752
Black / White	1.5m x 1.8m (5' x 6')	LL LC5621
Black / White	1.8m x 2.15m (6' x 7')	LL LB5921
Black / White	1.8m x 2.75m (6' x 9')	LL LB6921
Black / White with train	1.8m x 2.15m (6' x 7')	LL LB6701
Black / Mid Grey	1.5m x 1.8m (5' x 6')	LL LB56GB
Black / Mid Grey	1.8m x 2.15m (6' x 7')	LL LB67GB
White / Mid Grey	1.5m x 1.8m (5' x 6')	LL LB56GW
White / Mid Grey	1.8m x 2.15m (6' x 7')	LL LB67GW



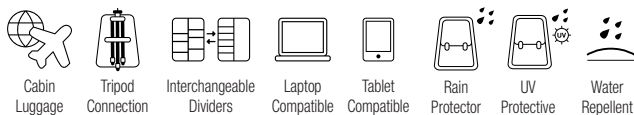


# Pro Light Collection

The Manfrotto PRO Light collection is a professional line specifically designed to provide unparalleled gear protection to fit the preference and workflow of any professional photographer or filmmaker. The PRO Light backpacks usher in the all-new M-Guard™ Protection System specifically designed and laboratory tested to guarantee the highest level of protection and shock resistance especially on areas of the bag where protection is most crucial. M-Guard™ dividers are made of high-density EVA foam that provide exceptional shock absorption while maintaining a super slim profile. In addition the SAS-TEC, a viscoelastic memory foam and multi-impact endurance, adds a structural reinforcement on the base of all the bags and provides extra shock absorbing properties. For an even better worry-free experience, the collection is equipped with TSA padlock that can be used to secure the steel wire puller to close the main compartment while Duraflex hardware, YKK zippers, hypalon reinforcement, trims and pullers make the packs both ultra-lightweight and strong enough to withstand the most intense use to ensure long-term protection for large amounts of gear. All the range also conveniently comes with a DuoFace sun/rain cover, which provides extra protection in rough weather and reflects sunlight, keep gear cool and dry all day long.



MB PL2-BP-FX-L **PRO LIGHT FLEXLOADER BACKPACK L**



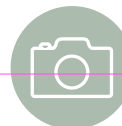
**M-Guard™**

The PRO Light Flexloader L is a backpack that literally expands to cater to your needs created for professional DSLR or mirrorless photo and video gear. It features a full front access to a fully padded gear compartment with customizable interiors, a front organizing compartment in the interior panel with see-trough pockets for small accessories, multiple attachment points for tripods and sliders with extensions and an included accessory organizer pouch. The bag holds professional DSLRs or mirrorless cameras with portrait grip, multiple lenses, foldable drones and more. The rear pocket is an expandable compartment that can be suitable for CSC/VDSLR 3-axis stabilizer gimbals and other accessories. This compartment is entirely separated from the main camera compartment and provides extra space without compromising the main compartment's capacity.

## Key benefits:

- Expandable rear padded pocket for CSC 3-axis gimbal stabilizer
- Adjustable torso height harness system and pivoting waist belt
- New M-Guard™ provides the highest level of gear protection
- Tuck-away strap system to secure multiple pro tripods and stands
- SAS-TEC structural base reinforcement for extra shock protection

External Dimensions: 36x35x56 cm / 14.17x13.78x22.05 in  
Internal Dimensions: 26x15x47 cm / 10.24x5.91x18.50 in  
Weight: 3 kg / 6.6 lbs



## MB PL2-BP-ML-M PRO LIGHT MULTILOADER CAMERA BACKPACK M FOR DSLR/CAMCORDER



**M-Guard™**

The PRO Light Multiloader offers 4 points of access for the ultimate carrying flexibility. The main front access door opens into the fully padded camera gear compartment. Two side doors allow for quick access to strategically placed cameras or lenses for a quick gear change, and the top access allows for a quick grab of the most used gear. The Multiloader backpack offers an entirely modular bag that has 3 different carrying configurations. With the use of different combinations of the harness and straps, it can be carried as either a backpack for maximum comfort, a sling bag for speedy lens changing, or as a duffel bag for on-the-go full gear access. It also offers a side attachment that can carry a full-sized tripod (up to the 055 series) and a front attachment that can be split into 2 to carry monopods or small light stands. It also features a checkpoint friendly 15" laptop compartment, adjustable torso height, double chest straps and a padded waist belt for load distribution

### Key benefits:

- 4 access points to reach into exactly what gear you need
- New M-Guard™ provides the highest level of gear protection
- 3 ergonomic modes of use: Backpack, sling, or video duffel bag
- Tuck-away strap system secures multiple pro tripods/support gear
- Adjustable harness system and double adjustable chest strap

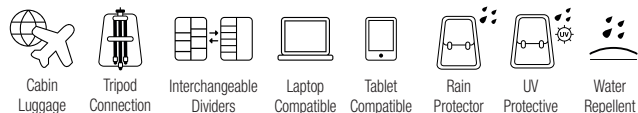
External Dimensions: 35,5x26x54 cm / 13.98x10.24x21.26 in

Internal Dimensions: 26x15,5x47 cm / 10.24x6.10x18.50 in

Weight: 2,16 kg - 4.76 lbs



## MB PL2-BP-FL-M PRO LIGHT FRONTLOADER CAMERA BACKPACK M FOR CSC/DSLR



**M-Guard™**

The PRO Light Frontloader offers a fully padded gear compartment with customizable interiors that can be accessed through a front access door. A secondary single side door offers quick access to most used gear that can fit a full frame camera without portrait grip with an attached 70-200mm f/2.8 lens with a service pocket on the interior panel for crucial small accessories. It features a side tripod attachment, a checkpoint friendly 15" laptop compartment, adjustable chest and waist straps, along with a DuoFace sun and rain cover for moisture and heat protection. A compartment with multiple pockets for small accessories is positioned on the front to give you fast access to all your working accessories.

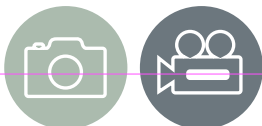
### Key benefits:

- Holds full-frame CSC/DSLR and 70-200/2.8 lens attached
- New M-Guard™ provides the highest level of gear protection
- Full front access & side access to 100% padded gear compartment
- SAS-TEC structural base reinforcement for extra shock protection
- Side tripod attachment

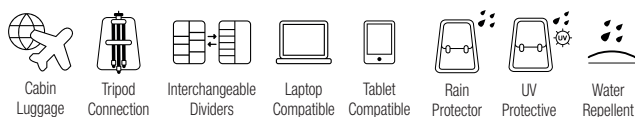
External Dimensions: 33x27x52 cm / 12.99x10.63x20.47 in

Internal Dimensions: 25x15x43 cm / 9.84x5.91x16.93 in

Weight: 1,78 kg / 3.9 lbs



### MB PL2-BP-BL-M PRO LIGHT BACKLOADER BACKPACK M FOR CSC/DSLR



**M-Guard™**

The PRO Light Backloader comes with a safe rear access into a fully padded camera gear compartment with customizable interiors. For full shooting experience, the Backloader M holds 2-3 full frame DSLR or mirrorless cameras with portrait grip on the main compartment plus multiple lenses. Alternatively the internal organization arrangement can be customized to meet different storage needs thanks to a moveable interior panel that can split the internal space in 2 additional different ways: the top compartment can be dedicated to the 20% to personal items and easily accessed by the quick top opening and the other 80% to gear or interchangeably carry 80% personal items and 20% camera gear. The top access point serves as an alternative for reaching into the most used cameras or lenses. In front is a multi-section compartment both internal and external for small accessories and personal items along with a laptop section that holds a 15" laptop.

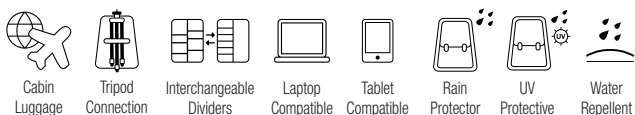
#### Key benefits:

- Holds full-frame CSC with attached grip and 70-200/2.8 lens
- New M-Guard™ provides the highest level of gear protection
- Safe rear access & top opening to 100% padded gear compartment
- SAS-TEC structural base reinforcement for extra shock protection
- Double side tripod connection points for added capacity

External Dimensions: 32x26x52 cm / 12.60x10.24x20.47 in  
Internal Dimensions: 27x16x43 cm / 10.63x6.30x16.93 in  
Weight: 1,89 kg / 4.17 lbs



### MB PL2-BP-BL-S PRO LIGHT BACKLOADER BACKPACK S



**M-Guard™**

The PRO Light Backloader comes with a safe rear access into the camera gear compartment. The Backloader S holds 2-3 full frame mirrorless cameras (no vertical grip attached) on the main compartment plus multiple lenses. Alternatively the internal organization arrangement can be customized to meet different storage needs with the moveable interior panel that split the internal space: the top compartment can be dedicated 30% to personal items and the other 70% dedicated to gear easily accessed from the rear opening. The top access point can also serve as an alternative for reaching into the most used cameras or lenses. It also has front pockets for small items along with a 15" laptop compartment.

#### Key benefits:

- Holds full-frame CSC (without grip) and 70-200/2.8 lens attached
- New M-Guard™ provides the highest level of gear protection
- Safe rear access & top opening to 100% padded gear compartment
- SAS-TEC structural base reinforcement for extra shock protection
- Double side tripod connection points for added capacity

External Dimensions: 32x22x51 cm / 12.6x8.66x20.08 in  
Internal Dimensions: 26x13,5x43 cm / 10.24x5.31x16.93 in  
Weight: 1,66 kg / 3.66 lb



# Pro Light Reloader



## MB PL-RL-T83-E PRO LIGHT TOUGH TH-83 CASE



Cabin  
Luggage



Waterproof



Dustproof

**IP67**

IP67  
Certified



Water  
Repellent



The new PRO Light Reloaders Tough H-83 case is designed for travelling professional photographers and videographers. Hermetic, waterproof, and impact resistant, Tough cases are built to resist to the toughest conditions of use and certified to resist temperatures from -33 to 90 °C (-27.4 to 194 °F); Built to perfectly protect all types of equipment contents, they are based on lightweight materials with a secure release latch system. They are IP67 tested meaning that there is no ingress of dust and withstands temporary immersion in water for 30 minutes. Manufactured and designed in Italy, the Tough H-83 is ideal for travellers who do not want to compromise between safety and portability. This case fits checked-in size airline restrictions\* and is provided with a 2 stage telescopic handle with self-locking system to prevent unwanted opening when carrying and transporting, and the automatic pressure release valve provides automatic regulation of the interior air pressure when on a flight. The two wheels have a larger diameter, keeping silent and stable during transport, giving optimal stability, strength, and made to be durable to last over time. The Tough H-83 features exclusive design functions that make it compatible with Manfrotto Tough Modular accessories. Six metal pins allow you to easily attach Tough Tripod bag and laptop bag (sold separately) for a more modular carrying experience.

### Key benefits:

- Heavy-duty and lightweight photographic hard-case made in Italy
- IP67 testing approved for water and dust protection
- Built to withstand the toughest conditions of use
- Safe release system latches for optimum security and protection
- Durable 2-stage telescopic handle with self-locking system

External Dimensions: 46,6x27,9x83,2 cm / 18.35x10.98x32.76 in  
Internal Dimensions: 39,9x26x76,3 cm / 15.71x10.24x30.04 in  
Weight: 7,7 kg / 16.98 lbs

\*Always check with your airline before flying for their current carry-on requirements.



## MB PL-RL-TH55 / MB PL-RL-TL55 PRO LIGHT RELOADER TOUGH H-55 AND L-55



Cabin  
Luggage



Tripod  
Connection



Interchangeable  
Dividers



Waterproof



Dustproof

**IP67**

IP67  
Certified



Water  
Repellent



Carry and protect your DSLR or modular camcorder gear with the New Pro Light Reloaders Tough TH-55 and TL55. These cases are made in Italy with heavy-duty materials, based on lightweight and military standard, with an original Manfrotto style. Manufactured and designed for travellers who don't want to compromise between safety and portability. New Pro Light Reloaders Tough family has an internal removable camera organization unit with Manfrotto CPS divider and it is provided also with 2 stage retractable trolley system. Pro Light Reloaders Tough TH-55 with high hood fits international carry-on sizes\* and holds your DSLR such as a Canon 5D Mark IV with a 400/f2.8 lens attached, a second camera body and 3-4 additional lenses depending on sizes while Tough LH-55 with low hood fits most Airplane companies\* carry-on sizes and holds your DSLR with a 70/200 mm f/2.8 lens attached, a second camera body and 4-5 additional lenses depending on sizes. An external front tripod holder allow you to carry your favourite big-size tripod, through proper metal pins positioned on front.

### Key benefits:

- Rigid and robust made in Italy photographic hard-case
- Based on lightweight and military standard materials
- Comes with a tripod holder system
- Safe release system latches for security
- Available in two version TL-55 low hood and TH-55 high hood

### MB PL-RL-TH5

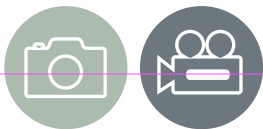
External Dimensions: 35x22,5x55 cm / 13.7x8.8x21.6 in  
Internal Dimensions: 26x17x50 cm / 10.2x6.6x19.6 in  
Weight: 4,0 kg / 8.8 lbs

### MB PL-RL-TL55

External Dimensions: 35x20x55 cm / 13.7x7.8x21.6 in  
Internal Dimensions: 26x14x50 cm / 10.2x5.5x19.6 in  
Weight: 4,4 kg / 9.7 lbs

\*Always check with your airline before flying for their current carry-on requirements. Be aware that overloading the bag will cause it to exp





## MB PL-RL-TH55-F **PRO LIGHT TOUGH TH-55 HIGHLID CARRY-ON WITH PRE-CUBED FOAM**



The new PRO Light Reloaders Tough H-55 case is designed for travelling professional photographers and videographers. Hermetic, waterproof, and impact resistant, these Tough cases are built to resist the toughest conditions of use and certified to resist temperatures from °C min -33 / max +90 (°F min -27.4 / max +194 );Built to perfectly protect all types of equipment contents and based on lightweight materials with a secure release latch system. They are IP67 tested meaning that there is no ingress of dust and withstands temporary immersion in water for 30 minutes. Manufactured and designed in Italy, the Tough H-55 is ideal for travellers who do not want to compromise between safety and portability. This case fits airline carry-on size restrictions\* and is provided with a two stage telescopic handle with self-locking system to prevent unwanted opening when carrying and transporting, and the automatic pressure release valve provides automatic regulation of the interior air pressure when on a flight. The two wheels have a larger diameter, silent and stable during transport, giving optimal stability, strength, and made to be durable to last over time. The new PRO Light Reloaders Tough H-55 is provided with 4 layers of pre-cubed foam and convoluted foam for the lid. The convoluted foam in the lid helps to firmly keep the stored equipment when the case is closed. The 4 layers of pre-cubed foam allows you to customize the insert to your own individual equipment and the four layers help for an easier initial setup and arrangement. The Tough H-55 features exclusive design functions that make it compatible with Manfrotto Tough Modular accessories. Four metal pins allow you to easily attach Tough Tripod bag and laptop bag (sold separately) for a more modular carrying experience.

### Key benefits:

- Heavy-duty and lightweight photographic hard-case made in Italy
- IP67 testing approved for water and dust protection
- Built to withstand the toughest conditions of use
- Safe release system latches for optimum security and protection
- 4 layers of pre-cubed foam to suit your personal equipment need

External Dimensions: 35x22,5x55 cm / 13.78x8.86x21.65 in  
Internal Dimensions: 28,5x20,5x52cm / 11.22x8.07x20.47in  
Weight: 4,5 kg / 9.92 lbs

\*Always check with your airline before flying for their current carry-on requirements.



## MB PL-RL-TH-HR **PRO LIGHT TOUGH HARNESS SYSTEM FOR MANFROTTO HARD CASES**



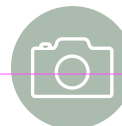
The Manfrotto PRO Light Tough Harness System is an exclusively designed solution compatible with Manfrotto PRO Light Tough hard cases\*: through 4 conveniently placed metal pins positioned on the front panel of the Manfrotto Tough cases, the Tough harness System can be easily connected through a strong and durable adjustable strap system to allow you to carry the Tough hard case like a backpack. This Harness System allows you to convert your Tough hard case to a backpack when you can't roll the bag on the ground to the rough or rocky terrain, or simply when you need to be faster and agile. The harness system is provided with a chest strap, a padded waist belt, and a padded backpanel to enhance comfort. Additional straps with buckle closure are also included which can be attached to the closed retractable handle for added stability and weight distribution. All fabrics are treated to be water repellent.

### Key benefits:

- Exclusive carrying solution for Manfrotto Tough hard cases
- Modular design compatible with Manfrotto Tough cases\*
- Converts your Manfrotto Tough case to a convenient backpack
- Padded shoulder harness for comfortable backpack style carrying
- Chest strap and padded waist belt for better weight distribution

External Dimensions: 27,5x7x50 cm / 10.83x2.76x19.68 in  
Weight: 0,83 kg / 1.83 lbs

\*Tough Harness System is not suggested to be used with the MB PL-RL-TH83



## MB PL-RL-TH-LS **PRO LIGHT TOUGH LAPTOP SLEEVE FOR MANFROTTO TOUGH HARD CASES**



Laptop  
Compatible



Tablet  
Compatible



Water  
Repellent

The Manfrotto PRO Light Tough Laptop Sleeve is an exclusively designed solution compatible with all Manfrotto PRO Light Tough hard cases: through 4 (or 6 depending on the model of Tough cases) conveniently placed metal pins positioned on the front panel of the Manfrotto Tough cases, this Tough laptop Sleeve bag can be easily connected through a heavy duty and durable adjustable strap system to enhance gear portability with a convenient laptop compartment. This laptop sleeve fits up to 15" laptop in a dedicated padded compartment. In front are two deep pockets dedicated for storing multiple accessories, chargers, and small electronics. In addition this Laptop Sleeve can be used as a stand-alone carrying solution for your laptop with the included shoulder strap that can be easily attached to allow you to carry the bag on your shoulder. The PRO Light Tough Laptop Sleeve is made up of treated fabric to be moisture and water repellent.

### Key benefits:

- Exclusive carrying solution for Manfrotto Tough hard cases
- Modular design compatible with all Manfrotto Tough cases
- Carries and protects up to a 15" laptop
- Dual front pockets to store accessories and electronics
- Can be used a standalone laptop bag with included shoulder strap

External Dimensions: 27x2.5x43 cm / 11.42x2.76x18.11 in

Internal Dimensions: 27x2.5x43 cm / 10.63x0.98x16.93 in

Weight: 0,77 kg / 1.7 lbs



## MB PL-RL-TH-TR **PRO LIGHT TOUGH TRIPOD BAG FOR MANFROTTO TOUGH HARD CASES**



Tripod  
Connection



Water  
Repellent

The Manfrotto PRO Light Tough Tripod bag is an exclusively designed solution compatible with all Manfrotto PRO Light Tough hard cases: through 4 (or 6 depending on the model of Tough cases) conveniently placed metal pins positioned on the front panel of the Manfrotto Tough cases, this Tough Tripod bag can be easily connected through a heavy duty and durable adjustable strap system to enhance gear portability. This tripod bag fits a variety of sizes of tripod thanks to its special expandable and adaptable design. From travel size tripods such as Manfrotto Befree range up to professional tripods such as 055 series with XPRO ball head or XPRO 3-way head attached. This tripod bag can also be used as a stand-alone carrying solution with the use of the included shoulder strap and the durable front handle. The PRO Light Tough Tripod Bag is made up of treated fabric to be moisture and water repellent.

### Key benefits:

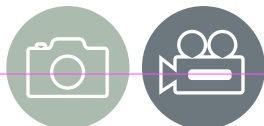
- Exclusive carrying solution for Manfrotto Tough hard cases
- Modular design compatible with all Manfrotto Tough cases
- Expandable design made to fit a variety of tripod sizes
- Dedicated straps to connect to Tough hard case attachment points
- Shoulder strap included for stand-alone bag usage

External Dimensions: 20x12x91.5 cm / 7.87x4.72x36.02 in

Internal Dimensions: 18x10x88 cm / 7.09x3.94x34.65 in

Weight: 0,54 kg / 1.19 lbs

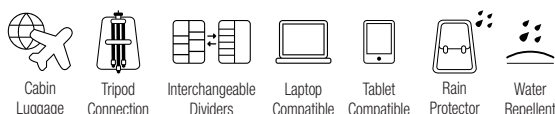




# Pro Light Reloader



MB PL-RL-A55 **PRO LIGHT RELOADER AIR-55**



The new Pro Light Reloader Air-55 Roller Bag for DSLRs and modular camcorder is designed for professional travelling photographers and videographers. Manufactured and designed specifically for travellers, it fits international airline carry-on sizes. Externally, Reloader Air-55 is made of Double Ripstop and Ballistic Nylon featuring upgraded corners protection and additional protection trims; internally, it features EVA moulded trays to ensure lightweight and protection. This roller bag can accommodate a pro DSLR attached with a 400 mm f/2.8 lens, a second DSLR body and up to 3-4 lenses as well as being able to comfortably fit a modular camcorder as a Canon C100 Mark II with lenses and accessories. The roller bag can be tailored to suit the equipment, with 14 protective dividers and 5 CPS dividers that can be easily adjusted. In addition, it is equipped with 2 internal panel see-through pockets for organize all small camera accessories, cables, memory cards etc. The Air-55 is equipped with a big easy-access front pocket for your 17" laptop and an additional second front pocket for documents and personal items.

## Key benefits:

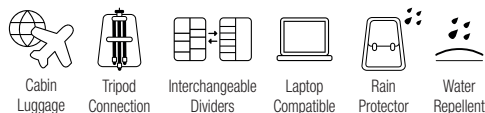
- Fits a Pro DSLR with 400/2.8 plus 3 lenses
- Outer made from Double Ripstop and Ballistic Nylon
- Strong, lightweight construction for lasting performance
- It fits international carry-on sizes\*
- 4-in-1 lock system, to close all pockets through TSA

External Dimensions: 35.5x23x55 cm / 14x9x21.6 in  
Internal Dimensions: 32x18x47 cm / 12.6x7x18.5 in  
Weight: 3,7 kg / 8.1 lbs

\*Always check with your airline before flying for their current carry-on requirements. Be aware that overloading the bag will cause it to expand.



MB PL-RL-S55 **PRO LIGHT RELOADER SPIN-55**



The new Pro Light Reloader Spin-55 Camera Roller Bag for DSLRs and full frame mirrorless is designed for professional travelling photographers. Manufactured and designed specifically for travellers, it fits international carry-on sizes\*. This brand-new Pro Light roller bag is the hardside trolley of the collection: externally, it is made of polycarbonate material and internally of EVA moulded trays to ensure lightweight and protection. It features 4 spinner double wheels to help carrying heavy gear and a front fast access for 15" laptop, accessories or a secondary access for photo gear. This roller bag comes with an internal organized pouch with CPS dividers for maximum flexibility of internal configuration that can be used as photo compartment or removed to use Spin-55 as normal travel luggage. It is equipped also with inner cross ribbons to hold personal items when using it as everyday suitcase. This roller bag can accommodate not only your DSLR such a Canon 5D Mark IV attached with a 70-200 mm f/2.8 lens, a second DSLR body and up to 3-4 lenses as well as being able to comfortably fit a full frame CSC as a Sony α9 with additional lenses and a DJI Mavic Pro combo kit. Tailor your bag to suit your own equipment, with 12 protective dividers + 2 CPS internal dividers that can be easily adjusted depending what you've got going on that day. In addition it is equipped with 2 internal panel see-through pockets for organize all small camera accessories, cables, memory cards etc.

## Key benefits:

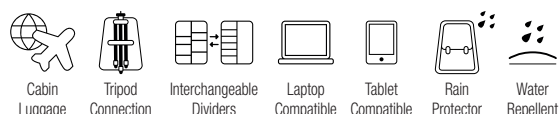
- Both photographic rolling case and travel suitcase
- Polycarbonate external shell for lightness and durability
- 4 spinner double wheels for easier carrying
- Front fast access to internal compartment
- Fixed TSA lock for extra security

External Dimensions: 35.5x22x55 cm / 14x8.6x21.6 in  
Internal Dimensions: 32x16x46 cm / 12.6x6.3x18.1 in  
Weight: 3,7 kg / 8.1 lbs

\*Always check with your airline before flying for their current carry-on requirements. Be aware that overloading the bag will cause it to expand.



MB PL-RL-A50 **PRO LIGHT RELOADER AIR-50**



The new Pro Light Reload Air-50 Roller Bag for DSLRs is designed for professional travelling photographers that are always on-the-go. Manufactured and designed specifically for travellers, it fits strictest airline carry-on sizes\*. Externally, Air-50 is made of Double Ripstop and Ballistic Nylon featuring upgraded corners protection and additional protection trims; internally, it features with EVA moulded trays to ensure lightweight and protection. This roller bag can accommodate a DSLR such as a Canon 5D Mark IV with a 70-200 mm f/2.8 lens attached, a second DSLR body and up to 3-4 lenses as well as being able to comfortably fit a complete full frame CSC kit. The roller bag can be tailored to suit the equipment, with 12 protective dividers + 2 CPS dividers that can be easily adjusted. In addition, it is equipped with 2 internal panel see-through pockets for organize all small camera accessories, cables, memory cards etc. The Air-55 is equipped with a big easy-access front pocket for your 15" laptop and an additional second front pocket for documents and personal items.

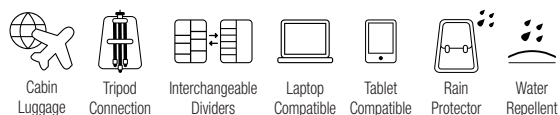
#### Key benefits:

- Fits a 2 DSLR with 70-200 mm f/2.8 lens plus 3-4 lenses
- Outer made from Double Ripstop and Ballistic Nylon
- Strong, lightweight construction for lasting performance
- It fits domestic carry-on sizes\*
- Fixed TSA lock for extra security

External Dimensions: 35.5x20x50 cm / 14x7.9x19.6 in  
Internal Dimensions: 30x16x43 cm / 11.8x6.3x16.9 in  
Weight: 3,2 kg / 7 lbs



MB PL-RL-H55 **PRO LIGHT RELOADER SWITCH-55**

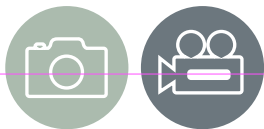


The new Pro Light Reload Switch-55 Camera Roller Bag for DSLRs and modular camcorder is manufactured and designed for professional photographers and videographers that are always on the go and it fits international carry-on sizes. Externally, Switch-55 is made of Double Ripstop and Ballistic Nylon featuring upgraded corners protection and additional protection trims; internally, it features EVA moulded trays to ensure lightweight and protection. Versatility is the key benefit of Switch-55: you can convert the roller bag into a backpack when needed, easily pulling out two hideaway padded shoulder straps positioned on front side pocket. This roller bag can accommodate not only a pro DSLR attached with a 400 mm f/2.8 lens, a second DSLR body and up to 3-4 lenses as well as being able to comfortably fit a modular camcorder as a Canon C100 Mark II with lenses and accessories. The roller bag can be tailored to suit the equipment with 14 protective dividers + 2 CPS dividers that can be easily adjusted. In addition it is equipped with 2 internal panel see-through pockets for organize all small camera accessories, cables, memory cards etc. The Switch-55 is equipped with a big easy-access front pocket for your 17" laptop and an additional second front pocket for documents and personal items.

#### Key benefits:

- 2-in-1 roller bag plus camera backpack
- Fits a 2 DSLR body and up to 4/5 lenses
- Outer made from Double Ripstop and Ballistic Nylon
- Strong, lightweight construction for lasting performance
- It fits international carry-on sizes\*

External Dimensions: 35.5x23x55 cm / 14x9x21.6 in  
Internal Dimensions: 32x18x47 cm / 12.6x7x18.5 in  
Weight: 4 kg / 8.8 lbs



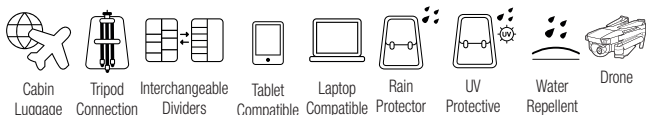
# Pro Light



MB PL-BM-10

## PRO LIGHT CAMERA MESSENGER BUMBLEBEE M-10 FOR DSLR/CSC

Camera  
Protection  
System



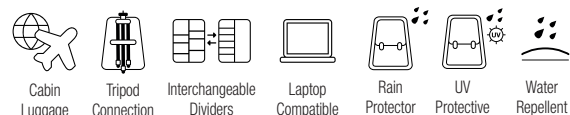
Manfrotto's Pro Light Bumblebee M-10 PL camera messenger is a professional camera bag designed for outdoor shooters who are always on the move. This super-roomy, slim profile bag is built to keep a professional camera kit plus a 13" laptop secure while providing long-wearing comfort. Its signature design Camera Protection System dividers safeguard a CSC/DSLR body with 24-70/2.8 lens attached plus 2 lenses (including 70-200/2.8), a handheld gimbal and lots of accessories. These can be taken out quickly through the top zip opening. The specially designed XtraSecure strap keeps the moving part of the handheld gimbal steady. The bag also holds a gripped DSLR kit if you are not carrying a laptop.



MB PL-BM-30

## PRO LIGHT CAMERA MESSENGER BUMBLEBEE M-30 FOR DSLR

Camera  
Protection  
System



Manfrotto's Pro Light Bumblebee M-30 PL camera messenger is a professional camera bag designed for outdoor shooters who are always on the move. This super-roomy, slim profile bag is built to keep a professional camera kit plus a 15" laptop protected while providing long-wearing comfort. Its signature design Camera Protection System dividers safeguard a DSLR body with 70-200/2.8 lens attached plus 3 lenses, a handheld gimbal and lots of accessories. These can be taken out quickly through the top zip opening. The specially designed XtraSecure strap keeps the moving part of the handheld gimbal steady. The bag also holds a gripped DSLR kit if you are not carrying a laptop.

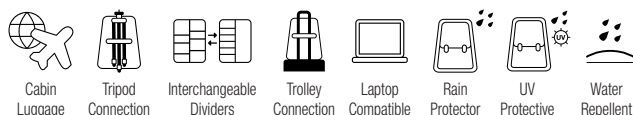




# Pro Light Collection



## MB PL-CB-BA PRO LIGHT CINEMATIC CAMCORDER BACKPACK BALANCE



Professional videographer's bag designed for a one-man-band & run and gunner who need to carry everything required to do their job in a single bag. This carry-on pack is built to hold and protect a VDSLR or mirrorless with several lenses and DJI Ronin M/MX fully set up thanks to its signature Camera Protection System dividers. Holds a device up to 17".

### Key benefits:

- Holds DSLR or mirrorless with DJI Ronin M/MX in a carry-on size
- Holds all gimbal accessories & video monopod
- Strong, lightweight construction designed for the long haul
- Tuck-away strap for carrying video rig and supports
- Handy side access for quick lens changes

External Dimensions: 37x23x59 cm / 14.5x9.0x23.2 in  
Internal Dimensions: 33.5x21.5x52 cm / 13.1x8.4x20.4 in  
Weight: 2,5 kg / 5.5 lbs



## MB PL-CB-EX PRO LIGHT CINEMATIC CAMCORDER BACKPACK EXPAND



Professional videographer's bag designed for a one-man-band & run and gunner who need to carry everything required to do their job in a single bag. This carry-on\* pack is built to hold and protect a modular camcorder with up to 70-200/2.8 mm lens attached and up to 10 lenses, video accessories or camera bodies. Thanks to its expandable front, this pack can be made bigger to fit a camcorder with its handle assembled. With a simple gesture, the bag can be expanded and its configuration changed to a handy working mode. When the backpack needs to be as compact as possible for travel, the front panel can easily be made smaller to fit carry-on travel bag size criteria. Holds a laptop up to 17".

### Key benefits:

- Expandable front for modular camcorder with assembled handle
- Shock Absorbing Divider System for impact protection
- Strong, lightweight construction designed for the long haul
- Tuck-away strap for carrying video rig and supports
- Handy side access for quick lens changes in the back panel

External Dimensions: 36.5x23x59 cm / 14.3x9.0x23.2 in  
Internal Dimensions: 33x21.5x52 cm / 12.9x8.4x20.4 in  
Weight: 2,6 kg / 5.7 lbs



# Pro Light Collection



**MB PL-CC-191N PRO LIGHT CAMCORDER CASE 191N FOR PXW-FS5 II, XF205, HDV, VDSLR**



Cabin Luggage



Interchangeable Dividers



Water Repellent



Camera Protection System

Perfect carrying & protecting solution for modular camera (e.g. SONY PXW-FS5 II, Canon EOS C70, disassembled Canon EOS C500 Mark II), classic HDV camera (e.g. SONY PXW-Z90, Canon XF205) or Video DSLR (e.g. Canon EOS-1D X Mark III, 5D mark IV) or video camera (e.g. BlackmagicMicro Studio camera 4K, Panasonic LUMIX GH5).

External Dimensions: 23x41x29 cm / 9x15x11.4 in

Internal Dimensions: 20x39x23 cm / 7.8x15.3x9 in

Weight: 1,3 cm / 2.86 lbs

#### Key benefits:

- Compact video camera case for professional videographers
- Perfect bag for SONY PXW-FS5 II or disassembled Canon EOS C500 MKII
- Absorb shock & protect the camera by Camera Protection System (CPS)
- Super wide dual-zipper opening ensures easy access



**MB PL-CC-192N PRO LIGHT CAMCORDER CASE 192N FOR C100, C300, C500 MKII, AG-DVX200**



Interchangeable Dividers



Water Repellent



Camera Protection System

Perfect carrying & protecting solution for modular camcorder (e.g. Canon C100 Mark II/C300 Mark II/C500 Mark II, Blackmagic URSA Mini Pro) or classic HDV camera (e.g. Sony PXW-Z280, Panasonic AGDVX200 4K) or Video DSLR with top handle installed (e.g. Canon EOS-1D X Mark III, 5D mark IV).

External Dimensions: 28x50.5x36 cm / 11x19.9x14 in

Internal Dimensions: 24x48.5x30 cm / 9.4x19x11.8 in

Weight: 2,1 cm / 4.6 lbs

#### Key benefits:

- Video camera case for professional videographers
- Perfect bag for Canon C100 Mark II/C300 Mark II/C500 Mark II, or Panasonic AG-DVX200 4K
- Protect the camera by Camera Protection System (CPS) & metal frame
- Expandable back pocket for bigger accessories



**MB PL-CC-193N PRO LIGHT CAMCORDER CASE 193N FOR PXW-Z280, HDV**



Interchangeable Dividers



Water Repellent



Camera Protection System

Perfect carrying & protecting solution for latest modular camcorder (e.g. SONY PXW-FS7 Mark II with handle detached) or HDV camera (e.g. Sony PXW-Z280, Panasonic AG-UX180 4K) or Video DSLR (e.g. Canon EOS-1D X Mark III, 5D mark IV)

External Dimensions: 29x53.5x33 cm / 11.4x21x13 in

Internal Dimensions: 23x51.5x27 cm / 9x20.2x10.6 in

Weight: 2,1 cm / 4.6 lbs

#### Key benefits:

- Video camera case for professional videographers
- Perfect bag for HDV cameras like SONY PXW-Z280, Panasonic AG-UX180 4K
- Protect the camera by Camera Protection System (CPS) & metal frame
- Extra room for bigger accessories offered by expandable back pocket
- Super wide dual-zipper opening ensures easy access



**MB PL-CC-195N PRO LIGHT CAMCORDER CASE 195N FOR PXW-FS7 MKII, ENG CAMERA, VDSLR**



Interchangeable Dividers



Water Repellent



Camera Protection System

Perfect carrying & protecting solution for latest modular camcorder (e.g. SONY PXW-FS7 Mark II) or shoulder mount ENG camera or Video DSLR with rig (e.g. Canon EOS-1D X Mark III, 5D Mark IV).

External Dimensions: 37x58.5x36 cm / 14.5x23x14 in

Internal Dimensions: 30x56.5x30 cm / 11.8x22.2x11.8 in

Weight: 2,9 kg / 6.4 lbs

#### Key benefits:

- Video camera case for professional videographers
- Perfect bag for SONY PXW-FS7 MKII or ENG camera or rigged VDSLR
- Protect the camera by Camera Protection System (CPS) & metal frame
- Extra room for bigger accessories



## MB PL-CC-197 PRO LIGHT CAMCORDER CASE FOR PDW-Z750, PXW-X400



Interchangeable  
Dividers



Trolley  
Connection



Water  
Repellent



Camera  
Protection  
System

CC-197 PL video case is an optimal professional solution for protecting, carrying and working with large camcorders or DSLRs used with a video rigs.

### Key benefits:

- Made from water-repellent fabric
- Camcorder case with shock absorption and vibration reduction
- Protect the camera by Camera Protection System (CPS) & metal frame

External Dimensions: 70x36x34 cm / 27.5x14.1x13.3 in  
Internal Dimensions: 66x29x26 cm / 25.9x11.4x10.2 in  
Weight: 2,54 kg / 5.6 lbs

# Rolling Organisers for lighting



## MB PL-LW-88W-2 ROLLING ORGANIZER



Interchangeable  
Dividers



Water  
Repellent

The MB PL-LW-88W-2 is a medium-sized rolling organizer, built to provide the most lightweight high-protection storage and transportation solution for lighting gear.

External Dimensions:  
40x27x84 cm / 15.7x10.6x33 in  
Internal Dimensions:  
36x21x77 cm / 14.1x8.2x30.3 in  
Weight:  
5 kg / 11 lbs



## MB PL-LW-97W-2 ROLLING ORGANIZER



Interchangeable  
Dividers



Water  
Repellent

The MB PL-LW-97W-2 is a large rolling organizer built to provide the most lightweight high-protection storage and transportation solution for lighting gear.

External Dimensions:  
44x30x100 cm / 17.3x11.8x39.3 in  
Internal Dimensions:  
40x24x94 cm / 15.7x9.4x37 in  
Weight:  
5,8 kg / 12.7 lbs



## MB PL-LW-99W-2 ROLLING ORGANIZER



Interchangeable  
Dividers

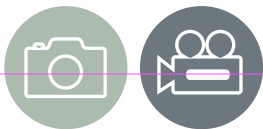


Water  
Repellent

The MB PL-LW-99W-2 is an extra-large rolling organizer built to provide the most lightweight high-protection storage and transportation solution for lighting gear.

External Dimensions:  
45x30x114 cm / 17.7x11.8x44.8 in  
Internal Dimensions:  
40x24x108 cm / 15.7x9.4x42.5 in  
Weight:  
6,4 kg / 14.1 lbs





# Lino Collection



**MB MBAG120PN**

**MB MBAG100PN**

**MB MBAG90PN**

**MB MBAG80PN**

**MB MBAG75PN**

## MB MBAG120PN **120CM PADDED TRIPOD BAG**

The largest bag in the range, the MB MBAG120PN is padded to protect your equipment and has the following features:

- Asymmetric tapered shape allows you to store the tripod with the head attached. Tripod legs fit comfortably in the narrower end and extra space is allowed for the larger volume of the head at the wider end. Diameter 23cm (9.1in).
- Zipper extends down the length of the bag, but also fully opens the top end of the bag.
- Thermoform padding holds the tripod in place in the bag and protects it, especially the head, during transport.
- Inner pocket holds accessories (such as video head pan bars).
- Innovative design and style; ballistic nylon, zips and other materials used are of top quality.
- Can be hand-carried horizontally by the side handle, vertically by the end handle (also useful for storage), or shoulder-carried using the included strap.
- Able to accommodate a tripod with a head up to 115 cm long

## MB MBAG100PN **100CM PADDED TRIPOD BAG**

Same design of MB MBAG120PN. Able to accommodate a tripod with a head up to 95 cm long.

## MB MBAG90PN **90CM PADDED TRIPOD BAG**

Same design of MB MBAG120PN. Able to accommodate a tripod with a head up to 85 cm long.

## MB MBAG80PN **80CM PADDED TRIPOD BAG**

Same design of MB MBAG120PN. Able to accommodate a tripod with a head up to 79 cm long.

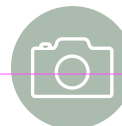
## MB MBAG75PN **75CM PADDED TRIPOD BAG**

Same design of MB MBAG120PN. Able to accommodate a tripod with a head up to 75 cm long.



## MB MBAG100PNHD **100CM HD PADDED TRIPOD BAG**

Long-lasting and ergonomically designed to carry heavy loads. The MBAG100PN HD padded tripod bag is perfect for storing tripods with heads up to 95cm long. Ideal for 475 tripod with 400 or 405 head. With its clever asymmetrical design, adjustable shoulder strap, and two carrying handles, you can carry it with ease. Thanks to its high-quality Thermoform padded interior, this tripod bag is particularly durable and resistant to wear and tear. Easily extend and fold your tripod in seconds, and keep it safely stored thanks to the bag's zippered closure, which can be fully opened. The padding will also act as a buffer between the tripod's exterior surface and hard edges, keeping the body and head resistant to damage. Plus, the inner pocket makes it easy for you to store and transport important accessories such as video head pan bars so you'll have everything you need for your shoot.



MB MBAG80N

MB MBAG70N

MB MBAG60N

### MB MBAG80N **80CM UNPADDED TRIPOD BAG**

The MB MBAG80N is an unpadded tripod bag.

- Slightly tapered to provide a better fit for your tripod with attached head. The wider end of the bag accommodates the head without requiring all levers to be removed.
- Zipper extends down the length of the bag, but also fully opens the top end of the bag.
- Logo end cap is padded to offer protection to the tripod head, the rest of the bag is unpadded.
- Shoulder strap included (the MB MBAG80N doesn't have either end or side handle).
- Innovative design and style; ballistic nylon, zips and other materials used are of top quality. Diameter 13cm (5.1in).
- it can transport a tripod and attached head of up to 78cm long

### MB MBAG70N **70CM UNPADDED TRIPOD BAG**

Same design of MB MBAG80N, it can transport a tripod and attached head of up to 68cm long.

### MB MBAG60N **70CM UNPADDED TRIPOD BAG**

Same design of MB MBAG80N, it can transport a tripod and attached head of up to 58cm long.



MB LBAG110



MB LBAG90

### MB LBAG110 **LIGHT STAND BAG 110CM FOR 3 LARGE LIGHT STANDS**

This ergonomically designed light stand bag is the perfect heavy-duty choice for photographers on the go. This bag can carry a lot more than you might think. That's because its strong nylon design can withstand surprisingly heavy payloads, with capacity for up to 3 Quick Stack Light Stands of up to 109cm. And thanks to its water-repelling materials, you can keep your equipment protected whatever the weather. This light stand bag has a high-quality padded interior so you can easily store your gear.

### MB LBAG90 **LIGHT STAND BAG 90CM FOR 4 COMPACT LIGHT STANDS**

Same as MB LBAG110 but it can carry 4 quick-stack light stands measuring up to 90cm in length.



### MSTRAP-1 **TRIPOD SHOULDER STRAP**

The MSTRAP-1 allows you to carry the tripod when attached to the ring positioned right under the tripod collar.